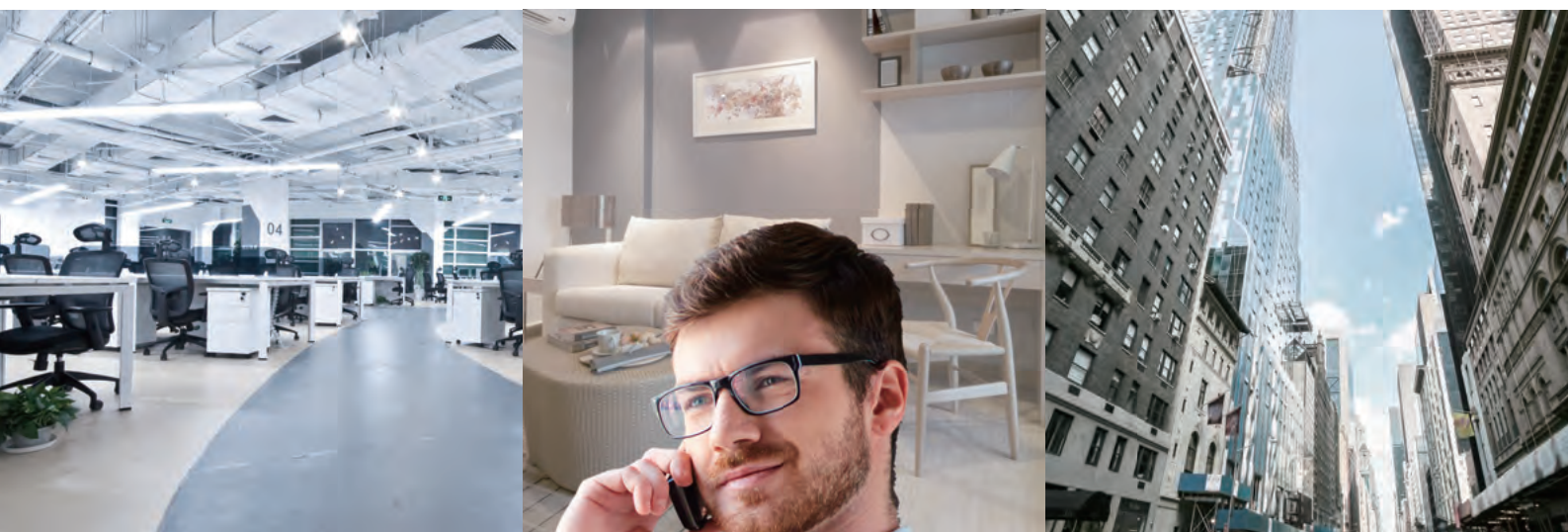


Panasonic

BUSINESS

Business Communications Server
KX-NSX2000
KX-NSX1000

Superior flexibility for changing work styles.



KX-NSX2000

KX-NSX1000

Companies require opportunities to make their operations more efficient. The business communication system needs to be flexible, innovative and competitive, while reducing operating costs and other expenses.

What is the KX-NSX?

Our communication styles continue to change over the years.

When only analogue communication was available, each phone line was assigned a specific telephone number. If the user moved and wanted to keep the same number, it was necessary to reroute the phone line.

When IP started to gain popularity, it became possible to assign a telephone number to a specific device. Simply by moving the device, users could use the same number in different locations.

Now, users expect that telephone numbers can be assigned to specific users, which can then be used from any device. As a result, users can conduct business communication not only inside the office, but even outside or at home, creating an opportunity to revolutionize their work style.

The Panasonic KX-NSX series delivers the next generation of communication systems to meet today's work style.



**KX-NSX provides services integrated with the user's work style.
Users are classified into three groups to better facilitate their management.**

Normal Users

For users who primarily work using a telephone.

Mobile Users

Users, such as sales representatives, who spend most of their time out of the office and require a smartphone or other mobile device to communicate with their customers.

Advanced Users

For users, such as supervisors of a call centre, who hold the authority to monitor correspondence with customers.



Flexible and Convenient Office Work

Whether you have employees that work in various locations around the office, are adding new employees, setting up a new office, starting a help desk or setting up employees to work from home - the KX-NSX can easily achieve your goals.

User Concept

Multi-Devices

Each user can assign a phone number to multiple devices such as their office phone and mobile phone, which enables a phone or mobile phone to be easily used as an office extension. Users can easily manage multiple devices spread over various locations using a single number.

Smart Desk

This function enables a number of users to share the same extension. Users apply their own profile with a service-in operation so they can only receive their personal calls and voicemail, etc. Once they have serviced-out, it becomes available for another employee. When an employee services in at a location, they are automatically serviced out at any previous location.

My Portal

Using the My Portal web-based user interface, each user can easily operate the telephony function settings and Unified Message customisation without knowing the PBX-specific feature number.



Scalability

Multi-Connection System

The KX-NSX is ideal for any company with scalability. Supports up to 2,000 users and provides connectivity for up to 32 sites with the KX-NS series for seamless communication. It can also save costs for making calls between offices with KX-NS networking as internal calls, and provides sharing of up to 128 tenants, unified messaging, an office directory, and much more.

Centralised Management

The KX-NSX enables companies spread out over multiple locations to perform remote management from a main site using IP networking. There is no need to have an administrator at every site, which enables low cost operations.



Reliability

Communication quality and reliability are extremely important. With our communication system, the communication service can be maintained even if problems occur with the system.

Reliable Backup System to Survive System Failures

1+1 Redundancy

With a primary unit and secondary unit installed, if a problem occurs with the working system on the primary unit, the backup system of the secondary unit is promoted to the working system and continues operations as KX-NSX master PBX.

Simplified Isolated Mode

If network trouble occurs with a multi-site connection, the KX-NS at each site can operate as a stand-alone system. The KX-NSX is resilient and enables communication to continue.

Remote Maintenance

A service engineer can remotely perform maintenance on the KX-NSX. The Panasonic cloud service enables the engineer to access your system securely, from anywhere, anytime - which allows for quick system recovery. KX-NSX maintenance is both flexible and efficient.



Mobility

Employees can quickly and reliably communicate with customers and other members when they are away from their desk or outside the office, which leads to improved customer satisfaction and work efficiency, at the same time.

DECT Wireless System

With a multi-zone wireless system, you can receive calls wherever you are on your premises. This reduces waiting times and enables customers to speak to the right person at the right time. You can also switch easily between desk phones and portable devices during conversations. Finally, DECT paging allows conversations to be shared among multiple participants.

Mobile Phone Integration

Mobile phones can be connected as office extensions and used with the same number as the office phone for easy management and customer contact. With UC Pro, presence management, text chat, and video call functions can be used to enhance your business work style.



Unified Communication and Applications

KX-NSX has UC Pro support, video communication functions, a built-in call centre function (external CTI servers not required), partner application linking, and more. These functions make business communication more efficient and enable users to utilise limited resources effectively.

Panasonic UC Pro

UC Pro supports multiple devices such as PCs and mobile phones and provides collaborative functions, including presence management, audio/text/video chat, and synchronization with Outlook Calendar.

Mobile clients can communicate with an account that is also registered to their PC, so they can take care of business while out of the office.

Video Communication

The combination of the video IP phone KX-HDV430 and communication IP camera KX-NTV150 or IP video doorphone KX-NTV160 enable easy video communication.



Built-in Call Centre

Automatic Voice Guidance

By being notified of their position in a queue through voice guidance, callers can better decide whether to wait, leave a message, or hang up. This provides a favourable impression for your business and improves the satisfaction of the customers for the service they are receiving.

Monitoring Callers and Call History Report

The supervisor can monitor the live status of call centres to understand on-site problems and improve them. Call history can also be output as a report to understand problems or opportunities relating to customer service. Report data can be saved to an external server.

Auto Recording and Backing Up Data

The KX-NSX can be used to automatically record conversations with customers, which can be listened to by supervisors, saved to an external server, and used to understand problems or opportunities relating to customer service.



Standard Users

Standard users who often use PC's need to streamline work activities and communicate more efficiently. With the KX-NSX with UC Pro, they can control communications from the screen of their PC and use IM and presence management to quickly reach co-workers. They can also easily contact people when moving around the office by using a DECT wireless system.

Remote Users

Remote users who mainly use telecommunication, such as home office users, need to use their extension numbers at home. With the KX-NSX, they can use a software phone and Panasonic IP Proprietary Telephones as remote extensions.

What kind of communication fits with your company?

The type of communication in the workplace varies for each and every person. Panasonic provides an appropriate solution for each of these different user types.



Reception/ Operators

Receptionists and operators that receive customer queries need to streamline call handling with easy operations such as point-and-click call controls, and see who's calling and why. With the KX-NSX and proprietary telephone, they can check the status of members, easily route calls, and cover multiple offices.

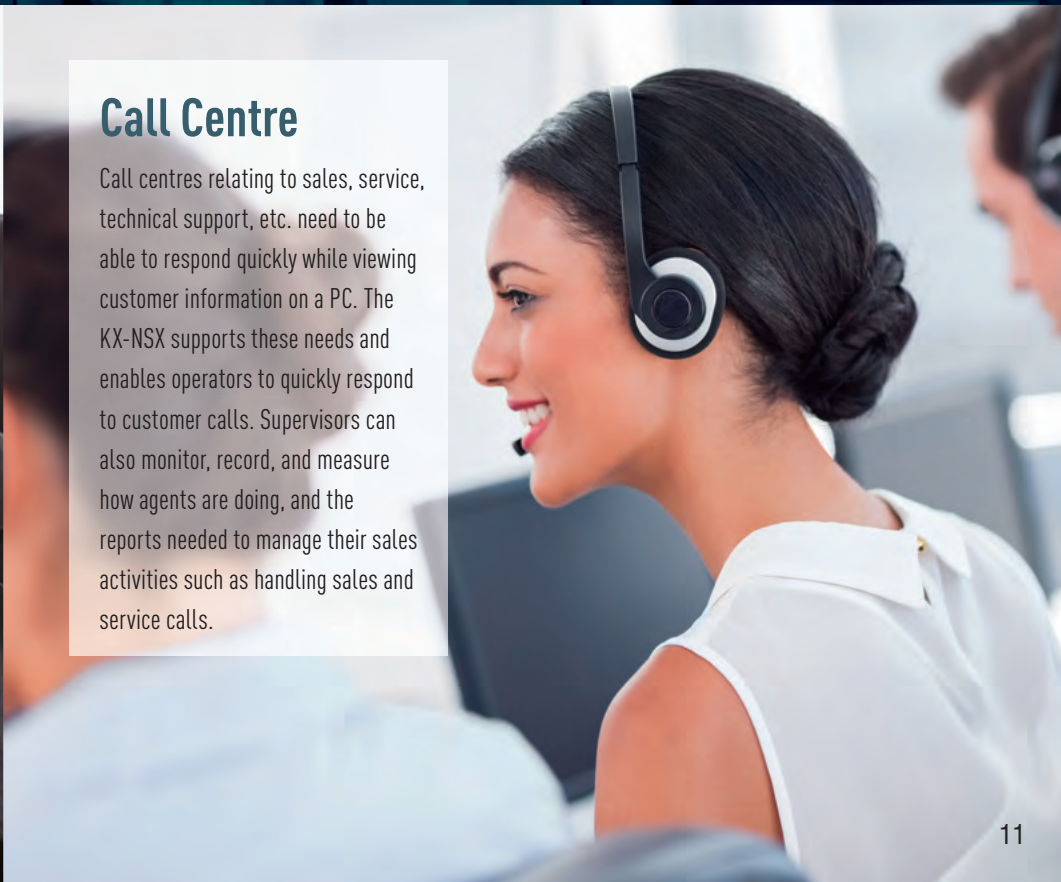
Executives/ Supervisors

Executives and supervisors need to control the office communications of all users using extensions, mobile phones or PCs. With the KX-NSX with UC Pro, they can perform UM, video calls, and one number management, etc.



Mobile Users

Mobile users that often work outside the office need to use any mobile phone as an extension of the office phone system with one number access, presence management, and more. UC Pro for the KX-NSX series is a business application that covers various business needs. Users can communicate in a suitable way anytime and anywhere.



Call Centre

Call centres relating to sales, service, technical support, etc. need to be able to respond quickly while viewing customer information on a PC. The KX-NSX supports these needs and enables operators to quickly respond to customer calls. Supervisors can also monitor, record, and measure how agents are doing, and the reports needed to manage their sales activities such as handling sales and service calls.

Terminal Line-up

A woman with dark hair in a bun, wearing a grey blazer over a pink and white striped shirt, is smiling while talking on a black telephone handset. She is sitting in a green office chair. The background is a bright, out-of-focus office window.

IP Proprietary Telephone/DECT Portable Station

The KX-NT500 series of fully functional IP telephones is designed for various businesses that require advanced communication.

A wide range of DECT handsets are also available to meet your business needs.

IP Proprietary Telephone

KX-NT560

- 4.4 inch Backlight LCD Display
- 4 x 8 Self Labelling, Flexible CO Buttons
- 2 Ethernet Port (1000 Base-T)
- Power-over-Ethernet (PoE)
- Full Duplex Speakerphone
- Built-in Bluetooth for Headset
- EHS support
- Eco Mode
- Available in Black and White



KX-NT556/KX-NT553 with KX-NT505

- 6-Line (KX-NT556) or 3-Line (KX-NT553) Backlight LCD Display
- 12 x 3 (KX-NT556) or 12 x 2 (KX-NT553) Self-Labeling, Flexible CO Buttons
- 2 Ethernet Port (1000 Base-T)
- Power-over-Ethernet (PoE)
- Full Duplex Speakerphone
- EHS support
- Eco Mode
- Available in Black and White
- Options: KX-NT505 (Add-on 48-Key Module)



Photo: KX-NT556 with KX-NT505

KX-NT551

- 1-Line Backlight LCD Display
- 8 Flexible CO Buttons
- 2 Ethernet Port (1000 Base-T)
- Full Duplex Speakerphone
- Power-over-Ethernet (PoE)
- Eco Mode
- Available in Black and White



KX-NT511A/KX-NT511P

- 1-Line LCD Display
- 3 Flexible CO Buttons
- Power-over-Ethernet (PoE) (KX-NT511P only)
- 2 Ethernet Port (100 Base-TX)
- AC Adaptor Included (KX-NT511A only)
- Full Duplex Speakerphone
- Eco Mode
- Available in Black and White



DECT Portable Station

Tough Model

KX-TCA385

- IP65^{*1} Compliant Dust Protection and Splash Resistance
- 1.8 inch Colour LCD
- 12 Flexible Keys
- Noise Reduction
- DECT Paging
- Vibration
- Built-in Bluetooth

Dimensions (W x D x H) (mm):

55.0 x 23.0 x 151.5

Weight:

150 g (Belt clip is included)



Slim & Light Model

KX-TCA285

- 12 Flexible Keys
- 1.8 inch Colour LCD
- Noise Reduction
- DECT Paging
- Vibration
- Built-in Bluetooth

Dimensions (W x D x H) (mm):

48.5 x 17.9 x 127.5

Weight: 88 g



Standard Model

KX-TCA185

- 12 Flexible Keys
- 1.8 inch Colour LCD
- Noise Reduction
- DECT Paging
- Vibration

Dimensions (W x D x H) (mm):

48.2 x 25.4 x 146.3

Weight: 115 g



* Dimensions and weight values do not include the charger.

*1 IP65 compliant: Protection against dust entering the handset, and protection against water spraying from any direction.

IP Phone

KX-HDV430 (Planned launch in 2016)

- Video Communication
- 4.3 inch Backlight LCD Display
- Colour Touch Panel
- 3 x 8 Self Labelling, Programmable Buttons
- 2 Ethernet Port (1000 Base-T)
- Power-over-Ethernet (PoE)
- Full Duplex Speakerphone
- Built-in Bluetooth for Headset
- EHS support
- Available in Black and White



KX-HDV330

- 4.3 inch Backlight LCD Display
- Colour Touch Panel
- 3 x 8 Self Labelling, Programmable Buttons
- 2 Ethernet Port (1000 Base-T)
- Power-over-Ethernet (PoE)
- Full Duplex Speakerphone
- Built-in Bluetooth for Headset
- EHS support
- Available in Black and White



KX-HDV230

- 2.3 inch Backlight LCD Display
- 5.1 inch Self Labelling Backlight LCD Display
- 2 x 12 Self Labelling, Programmable Buttons
- 2 Ethernet Port (1000 Base-T)
- Power-over-Ethernet (PoE)
- Full Duplex Speakerphone
- EHS support
- Available in Black and White



KX-HDV130

- 2.3 inch Backlight LCD Display
- 2 Programmable Buttons
- 2 Ethernet Port (100 Base-TX)
- Power-over-Ethernet (PoE)
- Full Duplex Speakerphone
- Available in Black and White



KX-HDV100

- 2.3 inch LCD Display
- 2 Programmable Buttons
- 1 Ethernet Port (100 Base-TX)
- AC Adaptor Included
- Available in Black and White



IP Camera

Communication IP Camera KX-NTV150

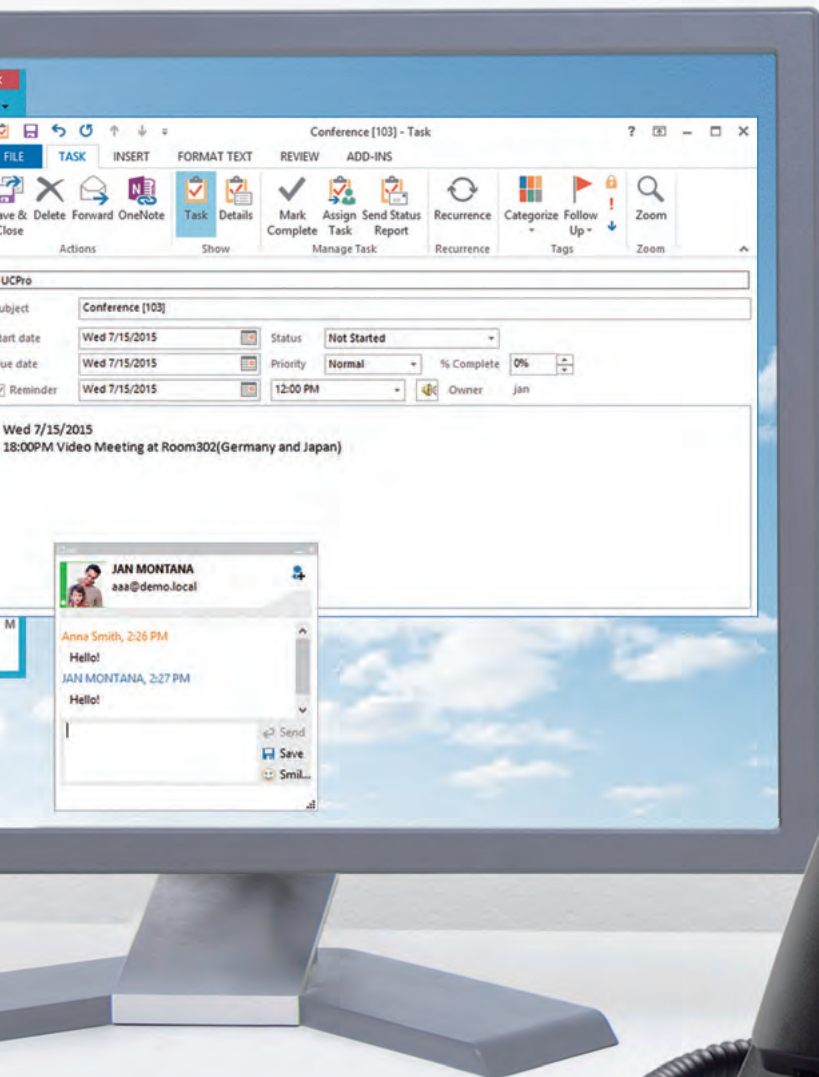
- Video Communication
- Dedicated Camera for the KX-NSX/KX-NS series
- Built-in Wi-Fi
- Power-over-Ethernet (PoE)/ AC Adaptor
- One Touch Calls
- Auto Dialling with Sensor



IP Video Doorphone KX-NTV160

- Video Communication
- Dedicated Camera for the KX-NSX/KX-NS series
- IP43 Support
- Power-over-Ethernet (PoE) only
- One Touch Calls
- Auto Dialling with Sensor





IP Phone/IP Camera (SIP)

The KX-HDV series of IP phones offer streamlined functions and high definition voice quality, and the KX-HDV430 can be linked to a KX-NTV series IP camera to directly view a video feed from the IP camera.

Trademarks and registered trademarks

- Microsoft®, Windows®, and Outlook® are registered trademarks of Microsoft Corporation in the U.S. and other countries.
 - The Bluetooth word mark and logos are owned by the Bluetooth SIG, Inc. and any use of such marks by Panasonic Corporation is under licence.
 - Wi-Fi is a trademark or registered trademark of Wi-Fi Alliance.
 - Apple, the Apple logo, iPad, and iPhone are trademarks of Apple Inc., registered in the U.S. and other countries. App Store is a service mark of Apple Inc.
 - Google Play and the Google Play logo are registered trademarks or trademarks of Google, Inc.
- Other trademarks and trade names are those of their respective owners.

Important

- Safety Precaution: carefully read the operating instructions and installation manual before using these products.

- Please contact your nearest Panasonic sales company or Panasonic dealer for the necessary information on things such as Activation Keys.
- Some models and applications are available in limited countries.
- The images shown of products display and lamps are composite images.
- Weights and dimensions are approximate.
- Design and specification subject to change without notice.
- These products may be subject to export control regulations.

DISTRIBUTED BY :



Panasonic®



System Capacity

Maximum Trunks^{*1}

The PBX supports the following number of trunks.

Type	KX-NSX2000			KX-NSX1000		
	Preinstalled	Stand-alone	Multi-connection	Preinstalled	Stand-alone	Multi-connection
Total Number of Trunks (Legacy+IP)	-	960	960	-	640	640
IP	-	960	960	-	640	640
	SIP	960	960	-	640	640
	H.323	256	256	-	256	256
Legacy	-	-	960	-	-	640
	Analogue (LCOT)	-	-	960	-	640
	BRI	-	-	960	-	640
	PRI23	-	-	960	-	640
	PRI30	-	-	960	-	640
	T1	-	-	960	-	640
	E1	-	-	960	-	640

Expansion Gateway System Capacity when Using Multi-site Networking

Type	Stand-alone	Multi-site connection								
		KX-NS1000				KX-NS700				
		With KX-TDA100D		With KX-TDA600/KX-TDA620, KX-TDE600/KX-TDE620		With KX-NS720				
		1 unit	2 units	1 unit	2 units	Stand-alone	1 unit	2 units	3 units	
Total Number of Trunks (Legacy+IP)			256				102	138	174	210
IP			256						64	
	SIP		256						64	
			48						32	
Legacy		30	120	240	160	256	38	74	110	146
	Analogue (LCOT)	2	112	224	160	256	12	24	36	48
	BRI	8	112	224	160	256	16	32	48	64
	PRI23	23	92	184	115	230	23	46	69	92
	PRI30	30	120	240	150	256	30	60	90	120
	T1	-	96	192	120	240	-	-	-	-
	E1	-	120	240	150	256	30	60	90	120

Maximum Terminal Equipment

The following shows the number of each terminal equipment type supported by the PBX.

Type	KX-NSX2000			KX-NSX1000			
	Preinstalled ^{*2}	Stand-alone	Multi-connection	Preinstalled ^{*2}	Stand-alone	Multi-connection	
User	100	2000	2000	70	1000	1000	
Device for User (Extension)	Wired Device	100	2000	2000	70	1000	
	IP Device	100	2000	2000	70	1000	
		IP-PT (KX-NT300/KX-NT500 Series) ^{*3}	100	2000	2000	70	1000
		KX-HDV Series	-	-	-	-	-
		KX-TGP600	-	-	-	-	-
		SIP phone (3rd Party)	-	2000	2000	-	1000
	Communication IP Camera / IP Video Doorphone ^{*4}	-	128	128	-	128	
	Legacy	-	-	2000	-	-	1000
		SLT	-	-	2000	-	1000
		DPT (DXDP ^{*5})	-	-	1024 (2000)	-	512 (1000)
APT		-	-	640	-	320	
DSS Console (KX-DT590/KX-DT390)	-	-	128	-	128		
PS	100	1000	1000	70	1000		
Mobile Number in User Container	-	2000	2000	-	1000		
Add-on Key Module (KX-NT505)	-	128	128	-	64		
Add-on Key Module (KX-NT303/KX-NT305)	-	2000	2000	-	1000		
CS	-	256	256	-	256		
	IP-CS	-	256	256	-	256	
CS	-	-	256	-	-		
Doorphone	-	-	124	-	-		
Door Opener	-	-	124	-	-		
External Sensor	-	-	124	-	-		

Expansion Gateway System Capacity when Using Multi-site Networking

Type	Stand-alone	Multi-site connection								
		KX-NS1000				KX-NS700				
		With KX-TDA100D		With KX-TDA600/KX-TDA620, KX-TDE600/KX-TDE620		With KX-NS720				
		1 unit	2 units	1 unit	2 units	Stand-alone	1 unit	2 units	3 units	
User										
Device for User (Extension)	Wired Device						166	198	230	262
	IP Device			640					128	
		IP-PT (KX-NT300/KX-NT500 Series) ^{*3}			640				128	
		KX-HDV Series								
		KX-TGP600								
		SIP phone (3rd Party)			256					128
	Communication IP Camera / IP Video Doorphone ^{*4}			128					128	
	Legacy	2	120	240	240	480	38	70	102	134
		2	120	240	240	480	36	68	100	132
		-	104	208	160	320	34	66	98	130
-		-	-	80	160	8	16	24	32	
DSS Console (KX-DT590/KX-DT390)	-	8	16	64	64	8	8	8	8	
PS			(Depends on the number of users on the KX-NSX side)					(Depends on the number of users on the KX-NSX side)		
Mobile Number in User Container			(Depends on the number of users on the KX-NSX side)					(Depends on the number of users on the KX-NSX side)		
Add-on Key Module (KX-NT505)			64					8		
Add-on Key Module (KX-NT303/KX-NT305)			640					128		
CS			64			40	48	56	64	
	IP-CS			64				32		
CS	-	26	26	32	32	8	16	24	32	
Doorphone	1	17	33	17	33	2	4	6	8	
Door Opener	1	17	33	17	33	2	4	6	8	
External Sensor	1	17	33	17	33	2	4	6	8	

*1 The maximum trunks of an Expansion GW cannot exceed the capacity of the KX-NSX.

*2 Only normal users are preinstalled.

*3 The KX-NT300 series is not supported by the KX-NSX2000/KX-NSX1000. It is only supported by expansion gateways in a multi connection system.

*4 Communication IP cameras and IP video doorphones are not counted in the number of users.

*5 When Digital XDP is used, the maximum number depends on the gateway system.

Specifications

KX-NSX2000 / KX-NSX1000		
Main CPU		Intel ATOM E3845 (Quad core 1.91 GHz)
Power Input	Rated Voltage	AC 100-240 V
	Frequency	50/60 Hz
	Current/Power	0.95-0.6 A
Power Consumption (when fully mounted)		50 W
External Backup Battery		External battery port is not supported. Support UPS: USB2.0: 1 port (Connector: Type A)
Memory Backup Duration		7 years
Operating Environment	Temperature	0 °C to 40 °C
	Humidity	10 % to 90 % (non-condensing)
Conference Call Trunk		255 parties (85 x 3-party conference call, etc.)
RJ45 Port	MNT Port	Gigabit LAN interface (for Maintenance)
	LAN1 Port	Gigabit LAN interface (for IP Trunk/IP Extension/Expansion GW)
	LAN2 Port	Gigabit LAN interface (for IP Trunk/IP Extension/Expansion GW)
	LAN3 Port	Gigabit LAN interface (for IP Trunk/IP Extension/Expansion GW)
Air-cooling Method		Fan
Dimension		430 mm (W) x 88 mm (H) x 340 mm (D)
Weight (when fully mounted)		Under 5.0 kg

Available Devices and Services for Each User Grade

User Grade	Device				Service	
	Main	Sub	Wireless	Mobile Number	UM Mailbox	Auto 2-way Manager
Advanced User ^{*1}	KX-NT560, KX-NT556, KX-NT553, KX-NT551 KX-HDV430, KX-HDV330, KX-HDV230, KX-HDV130, KX-HDV100 KX-DT546 ^{*4} , KX-DT543 ^{*4} , KX-DT521 ^{*4} KX-TCA385, KX-TCA285, KX-TCA185 IP-Softphone	KX-NT560, KX-NT556, KX-NT553, KX-NT551 KX-HDV430, KX-HDV330, KX-HDV230, KX-HDV130, KX-HDV100 KX-DT546 ^{*4} , KX-DT543 ^{*4} , KX-DT521 ^{*4} IP-Softphone	KX-TCA385, KX-TCA285, KX-TCA185	Mobile number and other public phone number	Yes	Yes
Mobile User ^{*2}						
Normal User ^{*3}						

*1 Requires Normal User AK, Mobile User AK and Advanced User AK.
 *2 Requires Normal User AK and Mobile User AK.
 *3 Requires Normal User AK.
 *4 Requires Expansion Gateway.
 *5 If assigned as a main device, sub device and wireless device is unavailable.

Option List for KX-NSX2000/KX-NSX1000

Activation Keys

Component	Model No.	
Main ^{*1}	Activate KX-NSX2000 main features (only for the KX-NSX2000)	
	Activate KX-NSX1000 main features (only for the KX-NSX1000)	
Maintenance	Activate maintenance features (Capturing Packet Trace/Expanding system logs/Software upgrade) Not necessary for 1st year, required from 2nd year	
Remote Maintenance	Activate remote maintenance features	
IP Trunk	IP Trunks (H.323/SIP)	
	1 ch	
	10 ch	
	50 ch	
	100 ch	
User Concept	Normal User	
		1 user
		10 users
		50 users
		100 users
	500 users	
	Mobile User	1 user
		10 users
		50 users
		100 users
		500 users
	Advanced User	1 user
		10 users
		50 users
		100 users
500 users		
General SIP Phones	3rd party SIP-Extension	
		1 ch
		10 ch
		50 ch
		100 ch
Panasonic Doorphone/ IP Camera	Communication IP Camera/ IP Video Doorphone	
		1 ch
		10 ch
		50 ch
IP-CS Channel Expansion	Channel Expansion (from 4 to 8 ch)	
		1 ch
		10 ch
Optional Features	Unified Messaging	
		UM message backup
	Call Centre	Two-way recording (manager control)
		ACD report, announcement of waiting number for queuing
		Announcement of waiting number for queuing
	Multiple CTI Connection	ACD report
		LDAP
		Expansion GW
		Redundancy

*1 Purchase required to activate the KX-NSX2000/KX-NSX1000.

Hardware

Component	Model No.
DSP	S (63 resources)
	M (127 resources)
	L (254 resources)
Storage Memory for VM Recording	S (Recording Time: 200 hours)
	M (Recording Time: 400 hours)
	L (Recording Time: 800 hours)
	LL (Recording Time: 1,600 hours)
Trunk Adaptor	E1
	PRI30
	PRI23
NSX Expansion Box	Pure IP-PBX
	Stacking Card for KX-TDE series

Option List for Expansion Gateways

Activation Keys

Component	Model No.	Expansion Gateway				
		KX-NS1000	With Legacy Gateway		KX-NS700	
			KX-TDA100D	KX-TDE600/KX-TDE620, KX-TDA600/KX-TDA620		
For Multi-connection Use						
Expansion GW	Expansion GW connection for the KX-NS700/KX-NS1000 (NS unit)	KX-NSXF007	●	-	-	●
Networking	Router function	KX-NSNT01	●	-	-	-

Hardware

Component	Model No.	Expansion Gateway					
		KX-NS1000	With Legacy Gateway		KX-NS700		
			KX-TDA100D	KX-TDE600/KX-TDE620, KX-TDA600/KX-TDA620			
DSP	S (63 resources)	KX-NS0110	●	-	-	-	
		KX-NS5110	-	-	-	●	
	M (127 resources)	KX-NS0111	●	-	-	-	
		KX-NS5111	-	-	-	●	
L (254 resources)		KX-NS0112	●	-	-	-	
		KX-NS5112	-	-	-	●	
		KX-NS5180	-	-	-	●	
		KX-NS5282	-	-	-	●	
Trunk	4-Port BRI Card (BRI2)	KX-NS5284	-	-	-	●	
	4-Port BRI Card (BRI4)	KX-NS5290	-	-	-	●	
	PRI Card (PRI23)	KX-NS5290CE	-	-	-	●	
	PRI30/E1 Card (PRI30/E1)	KX-NS5162	-	-	-	●	
	Doorphone Interface Card (DPH2)	KX-NS5170	-	-	-	●	
Extension	4-Port Super Hybrid Extension Card (DHLC4)	KX-NS5171	-	-	-	●	
	8-Port Digital Extension Card (DLC8)	KX-NS5172	-	-	-	●	
	16-Port Digital Extension Card (DLC16)	KX-NS5173	-	-	-	●	
	8-Port Single Line Telephone Extension Card (MCSLC8)	KX-NS5174	-	-	-	●	
Free	16-Port Single Line Telephone Extension Card (MCSLC16)	KX-NS0130	●	-	-	-	
	Stacking Master Card for Legacy Gateway (STACK-M)	KX-NS0180	●	-	-	-	
	2-Port Analogue Trunk/2-Port SLT Card (SLC2/LCOT2)	KX-NS0280	●	-	-	-	
	4-Port BRI/2-Port SLT Card (SLC2/BRI4)	KX-NS0290	●	-	-	-	
FAX	PRI23/2-Port SLT Card (SLC2/PRI23)	KX-NS0106	●	-	-	-	
	FAX Interface Card (FAX)	KX-NS0161	●	-	-	-	
Doorphone	Doorphone Interface Card (DOORPHONE)	KX-NS7130	-	-	-	●	
Expansion Master	Expansion Master Card (EXP-M)	KX-NS0132	-	-	-	●	
Legacy Gateway	Stacking Card for KX-TDE/KX-TDA Series (STACK-S (TDE))	KX-TDA0180	-	●	●	-	
Physical Trunk	8-Port Analogue Trunk Card (LCOT8)	KX-TDA0181	-	●	-	-	
	16-Port Analogue Trunk Card (LCOT16)	KX-TDA0182	-	●	-	-	
	8-Port DID Card (DID8)	KX-TDA0183	-	●	●	-	
	4-Port Analogue Trunk Card (LCOT4)	KX-TDA0184	-	●	●	-	
	8-Port E & M Trunk Card (E&M8)	KX-TDA0187	-	●	●	-	
	T-1 Trunk Card (T1)	KX-TDA0188	-	●	●	-	
	E-1 Trunk Card (E1)	KX-TDA0284	-	●	●	-	
	4-Port BRI Card (BRI4)	KX-TDA0288	-	●	●	-	
	8-Port BRI Card (BRI8)	KX-TDA0290	-	●	●	-	
	PRI Card (PRI23)	KX-TDA1180	-	●	-	-	
	8-Port Analogue Trunk Card with CID (CLCOT8)	KX-TDA1186	-	●	-	-	
	8-Port Analogue Trunk Card with CID Daughter Card (CLCOT8E)	KX-TDA6181	-	●	●	-	
	16-Port Analogue Trunk Card (ELCOT16)	KX-TDA6381	-	●	●	-	
	16-Port Analogue Trunk Card w/o CID (ELCOT16)	KX-TDA6382	-	●	●	-	
	Physical Extension	4 Cell Station Interface Card (CSIF4)	KX-TDA0143	-	●	●	-
		8 Cell Station Interface Card (CSIF8)	KX-TDA0144	-	●	●	-
8-Port Digital Hybrid Extension Card (DHLC8)		KX-TDA0170	-	●	●	-	
8-Port Digital Extension Card (DLC8)		KX-TDA0171	-	●	●	-	
16-Port Digital Extension Card (DLC16)		KX-TDA0172	-	●	●	-	
8-Port Single Line Telephone Extension Card (SLC8)		KX-TDA0173	-	●	●	-	
16-Port Single Line Telephone Extension Card with Caller ID (CSLC16)		KX-TDA1176	-	●	●	-	
16-Port Single Line Telephone Extension with Caller ID and Message Lamp Card (MCSLC16)		KX-TDA1178	-	●	●	-	
24-Port Single Line Telephone Extension with Caller ID and Message Lamp Card (MCSLC24)		KX-TDA6174	-	●	●	-	
16-Port Single Line Telephone Extension Card (ESLC16)		KX-TDA6175	-	●	●	-	
16-Port Single Line Telephone Extension with Message Lamp Card (EMSLC16)		KX-TDA6178	-	●	●	-	
24-Port Single Line Telephone Extension Card with Caller ID (ECSLC24)		KX-TDA6179	-	●	●	-	
Others	4-Port Doorphone Card (DPH4)	KX-TDA0161	-	●	●	-	
	2-Port Doorphone Card (German Type) (DPH2)	KX-TDA0162	-	●	●	-	
	4-Port External Input/Output Card (EIO4)	KX-TDA0166	-	●	●	-	
	16-Channel Echo Canceller Card (ECHO16)	KX-TDA0168	-	●	●	-	
	Extension Caller ID Card (EXT-CID)	KX-TDA0189	-	●	●	-	
	8-Port Caller ID/Pay Tone Card (CID/PAY8)	KX-TDA0190	-	●	●	-	
	Optional 3-Slot Base Card (OPB3)	KX-TDA0193	-	●	●	-	
	8-Port Caller ID Card (CID8)	KX-TDA0166	-	●	●	-	
	16-Channel Echo Canceller Card (ECHO16)	KX-TDA0103	-	●	●	-	
	L-Type Power Supply Unit (PSU-L)	KX-TDA0104	-	●	●	-	
PSUs	M-Type Power Supply Unit (PSU-M)						

Compatible Panasonic Equipment

The KX-NSX2000/KX-NSX1000 supports the following equipment:

Cell Stations

- DECT 4 Channel IP Cell Station Unit (KX-NS0154)

Doorphones

- IP Video Doorphone (e.g., KX-NTV160)

Telephones

- Panasonic Proprietary Telephones
 - IP proprietary telephones (e.g., KX-NT500 series)
 - IP softphones (e.g., KX-NCS8100)
 - Portable stations (e.g., KX-TCA385, KX-TCA285)
- IP Phones (SIP)
 - KX-HDV series SIP phones (e.g., KX-HDV430, KX-HDV330, KX-HDV230)
 - SIP cordless phones (e.g., KX-TGP600)
 - IP conferencing phones (e.g., KX-NT700)
 - Third party SIP phones (SIP hardphones/SIP softphones)
- Others
 - Communication IP Camera (e.g., KX-NTV150)

Adaptors

- E1 Trunk Adaptor (KX-NS8188)
- PRI Adaptor (KX-NS8290CE, KX-NS8290)

If an expansion gateway is connected to a KX-NSX2000/KX-NSX1000, the following equipment is also supported.

Cell Stations

- DECT
 - 2-Channel Cell Station Unit (KX-TDA0155) *Except the KX-NS1000

Telephones

- Panasonic Proprietary Telephones
 - IP proprietary telephones (KX-NT300 series)
 - Digital Proprietary Telephone (e.g., KX-DT300 series, KX-DT500 series) *Except the KX-NS1000
 - DSS Console (e.g., KX-DT390, KX-DT590) *Except the KX-NS1000
 - Analogue Proprietary Telephone (e.g., KX-T7700 series) *Except the KX-NS1000
- Other
 - Single line telephones

If a legacy gateway is connected to a KX-NS1000, the following equipment is also supported.

Cell Stations

- DECT
 - 2-Channel Cell Station Unit (KX-TDA0155)
 - 8-Channel High-density Cell Station Unit (KX-TDA0158)

Telephones

- Panasonic Proprietary Telephones
 - Digital Proprietary Telephone (e.g., KX-DT300 series, KX-DT500 series)
 - Portable Station (e.g., KX-TD7600 series)
 - DSS Console (e.g., KX-DT390, KX-DT590)
 - Analogue Proprietary Telephone (e.g., KX-T7700 series)

Note

Some models will be exported to limited regions. Please contact our dealer and confirm the availability of specific models in your region.

System Feature Capacity

	Item	Capacity		Item	Capacity		Item	Capacity
System	Absent Message—Extension	1 x 16 characters	Groups	Idle Extension Hunting Group	256 (16 extensions/group)	Unified Messaging	UM Channel	128
	Absent Message—System	8 x 16 characters		Incoming Call Distribution Group	256 (128 extensions/group)		Fax Channel	31
	Call Park Zone	System/100, 100 for each tenant		Paging Group	200		IMAP Channel	72
	Conference	3 – 32 parties per conference 256 parties total per KX-NSX series PBX		PS Ring Group	32		UM Recording Time	1,600 hours
	COS	512		Trunk Group	128		Message Length	1–60 minutes/Unlimited
	DID/DDI Table	32 digits, 7,000 entries		P2P Group	512		Number of Simultaneously Usable 2way Rec (Number of Conference Rooms)	85
	Extension number	1 – 5 digits (PS:1-4 digits)		TRS/Barring Level	7		Auto 2way Rec Manager	96
	Extension Personal Identification Number (PIN)	10 digits, 1 entry/extension		TRS/Barring Denied Code	16 digits, 600 entries/level		UM System Manager	1/Tenant
	Host PBX Access Code	10 digits, 10 entries/trunk group		TRS/Barring Exception Code	16 digits, 600 entries/level		UM Message Manager	1/Tenant
	Multiple Subscriber Number (MSN)	10 entries per ISDN-BRI port		Routing Plan Table	240 entries		UM Service Group	384/Tenant
	Number of Characters of Name	20	Leading Number Table	16 digits, 5,000 entries	Custom Service	200/Tenant		
	Printing message	8	Leading Number Exception Table	16 digits, 1,000 entries	Mailbox Group	40		
	Queuing Time Table	256	ARS Carrier	128	Mailbox Group Member	200		
	Ring Tone Pattern Plan	8	Itemized Billing Code	10 digits	System Guidance	1,400		
	Simultaneous Programmers (PT Programming)	• one manager programmer + 127 personal programmers • 128 personal programmers	Authorization Code for Tenant	16 digits	Custom Service Menu	200 items/Tenant		
	Simultaneous Programmers (Web Maintenance Console)	• one installer level account • 1,000/2,000 User (User) level accounts • 128 User (Administrator) level accounts	Authorization Code for Trunk Group	10 digits	Company Greeting	32		
	SMDR Call Storage	160,000 calls	Outgoing Call Log	100 records/user 10,000 records/system	Mailbox Group List Voice Label	20		
	Special Carrier Access Code	16 digits, 100 entries	Incoming Call Log	100 records/user 20,000 records/system	System Caller ID Caller Name	1,200		
	Tenant	128	Incoming Call Log—PS + Incoming Call Distribution Group	10,240 records/system	Custom Service Menu	60		
	Time Service Holiday	24	Message Waiting—PS + Incoming Call Distribution Group	KX-NSX2000: 2,000 KX-NSX1000: 1,000	Company Name	10		
	Verification Code	4 digits, 2,000 entries	Message Waiting—PT + SLT	KX-NSX2000: 2,000 KX-NSX1000: 1,000	Company Greeting	45		
	Verification Code Personal Identification Number (PIN)	10 digits, 2,000 entries	Outgoing Message (OGM)	128	System Mailbox Group Voice Label	10		
	Charge Record for HOTEL	40,000 calls	OGM Total Recording Time	Approx. 64 minutes	System Caller Name	10		
	Dialling	Emergency Call	32 digits, 20 entries	OGM Port	128	Prompt Selection	30	
		Hot Line	32 digits	Billing items for guest rooms	4,000 records/PBX	Hold Announcement Menu	30	
Key Pad Protocol Dial (ISDN Service Access)		32 digits	Hotel Operator	4	Mailbox Owner	10		
Personal Speed Dialling		32 digits, 100 entries/extn.	Charge Rate	7 digits including a decimal	Personal Greeting	45		
Quick Dialling		8 digits, System 3,000 + 1,000/Tenant	Charge Denomination	3 currency characters/symbols	Interview Message	10		
Redial		32 digits	Multi-Connection Networking	1 Main Unit 31 Expansion Gateway	Personal Group List	10		
System Speed Dialling		33,000/System *System wide: 1,000 entries *Tenant wide: 32,000 entries Max for 1 tenant: 1,000 entries	TIE Line Routing and Modification Table	32 entries	Personal Caller-ID	10		
One-touch Dialling—PT		32 digits, 5,000 entries/system	Leading Number	3 digits	EMD List Member Name	10		
One-touch Dialling—PS		32 digits, 1,000 entries/system	PBX Code	7 digits	Supervisor	32		
Groups		Conference Group	48 (31 members/group for Conference Group Mode, 31 members/group for Broadcast Mode)	Number of Users (Number of General Mailboxes)	KX-NSX2000: 2,000 KX-NSX1000: 1,000	Auto 2way Rec Manager	96	
	User Group	512	Total Number of UM Mailboxes	KX-NSX2000: 2,608 KX-NSX1000: 1,608	Number of Call log for ACD report	1,200,000		
	Call Pickup Group	200	Tenant	128	Users (User)	KX-NSX2000: 2,000 accounts ¹ KX-NSX1000: 1,000 accounts		
			Class of Service	512	Users (Administrator)	128 accounts		

¹ The total number of administrator and user accounts combined cannot exceed the maximum user accounts.

Feature List

1. Call Handling Features

Incoming Call Features

- Incoming Trunk Call Features
 - Direct In Line (DIL)
 - Direct Inward Dialling (DID)/Direct Dialling In (DDI)
 - Multiple Subscriber Number (MSN) Ringing Service
- Calling Line Identification (CLI) Distribution
- Intercept Routing
- Intercept Routing—No Destination
- Internal Call Features
 - Internal Call Block
 - Ring Tone Pattern Selection
 - Call Waiting

Receiving Group Features

- Idle Extension Hunting
- Incoming Call Distribution Group Features
 - Group Call Distribution
 - Queuing Feature
 - Distribution Order
 - VIP Call
 - Overflow Feature
 - Log-in/Log-out
 - Supervisory Feature
 - Supervisory Feature (ACD)

Call Forwarding (FWD)/Do Not Disturb (DND) Features

- Call Forwarding (FWD)
- Do Not Disturb (DND)
- FWD/DND Button, Group FWD Button

Answering Features

- Line Preference—Incoming
- Call Pickup
- Hands-free Answerback

Making Call Features

- Predialling
- Automatic Extension Release
- Intercom Call
- Trunk Call Features
 - Emergency Call
 - Account Code Entry
 - Dial Type Selection
 - Reverse Circuit
 - Trunk Busy Out
 - Pause Insertion
 - Host PBX Access Code (Access Code to the Telephone Company from a Host PBX)
 - Special Carrier Access Code
- Seizing a Line Features
 - Line Preference—Outgoing
 - Trunk Access

Memory Dialling Features

- One-touch Dialling
- Last Number Redial
- Speed Dialling—Personal/System
- Speed Dialling—External (LDAP)
- Quick Dialling
- Hot Line

Toll Restriction (TRS)/Call Barring (Barring) Features

- Toll Restriction (TRS)/Call Barring (Barring) Budget Management
- Extension Dial Lock
- Dial Tone Transfer
- Walking COS
- Verification Code Entry

Automatic Route Selection (ARS) Features

- Automatic Route Selection (ARS)
- Primary Directory Number (PDN)/Secondary Directory Number (SDN) Features

Busy Line/Busy Party Features

- Automatic Callback Busy (Camp-on)
- Executive Busy Override
- Call Monitor
- Second Call Notification to Busy Extension
- Call Waiting Tone
- Off-hook Call Announcement (OHCA)
- Whisper OHCA

Conversation Features

- Hands-free Operation
- Off-hook Monitor
- Mute
- Headset Operation
- Data Line Security
- Flash/Recall/Terminate
- External Feature Access (EFA)
- Trunk Call Limitation
- Calling Party Control (CPC) Signal Detection

Transferring Features

- Call Transfer
- SIP Refer Transfer

Holding Features

- Call Hold
- Call Park
- Call Splitting
- Music on Hold

Conference Features

- Conference
- Privacy Release

Conference Group Call Features

- Conference Group Call
- Direct Inward System Access (DISA) Features
- Direct Inward System Access (DISA)
- Automatic Fax Transfer

Paging Features

- Paging
- Trunk Answer From Any Station (TAFAS)

External Device Features

- Doorphone Call
- Door Open
- External Sensor
- External Relay Control
- Communication IP Camera/IP Video Doorphone

Caller ID Features

- Caller ID
- Incoming Call Log

Message Features

- Message Waiting
- Absent Message

Proprietary Telephone (PT) Hardware Features

- Fixed Buttons
- Flexible Buttons
- LED Indication
- Display Information

Administrative Information Features

- Record Log Features
 - Station Message Detail Recording (SMDR)
 - Syslog Record Management
- Printing Message
- Call Charge Services

Hospitality Features

- Room Status Control
- Call Billing for Guest Room

Extension Controlling Features

- Extension Personal Identification Number (PIN)
- Extension Feature Clear
- Timed Reminder

Smart Desk Features

- Service-In Feature
- Service-out Feature

Audible Tone Features

- Dial Tone
- Confirmation Tone

Computer Telephony Integration (CTI) Features

- Computer Telephony Integration (CTI)
- Cellular Phone Features

Miscellaneous Features

- Background Music (BGM)
- Outgoing Message (OGM)

User Concept

- User Container
- User Container Configuration
- Individual User Information Management of the Construction and Maintenance Personnel

Editing User Settings

- Security (Password)
- Smart Desk Features
- Linking with LDAP User Information

Call Control Feature

- Main Device/Device Common
- Sub-device
- DSS Console
- Wireless Device
- Public (Mobile Phone) Device
- UM (Mailbox)
- Various Logs and Reports
- CTI

2. Unified Messaging System

Unified Messaging System Administration

- System Administration
- Custom Service Builder
- Default Mailbox Template
- Password Administration
- System Backup/Restore
- System Reports
- System Security

Fax Server

System and Subscriber Features

- System Features
 - Alternate Extension Group
 - Auto Forwarding
 - Automated Attendant (AA)
 - Automatic Two-way Recording for Manager
 - Broadcasting Messages
 - Call Services
 - Call Transfer to Outside
 - Caller ID Call Routing
 - Caller ID Screening
 - Caller Name Announcement
 - Class of Service (COS)
 - Company Greeting
 - Company Name
 - Covering Extension
 - Custom Service
 - Dialling by Name
 - Emergency Greeting
 - Extension Group
 - Fax Service
 - Hold
 - Holiday Service
 - Hospitality Mode
 - Intercept Routing to a Mailbox
 - Intercom Paging
 - Interview Service
 - List All Names
 - Logical Extension (All Calls Transfer to Mailbox)
 - Message Reception Mode
 - Message Waiting Notification—E-mail Device
 - Message Waiting Notification—Lamp
 - Message Waiting Notification—Telephone Device
 - Multilingual Service
 - No DTMF Input Operation
 - On Hold Announcement Menu
 - Operator Service
 - PIN Call Routing
 - Play System Prompt After Personal Greeting
 - Port Service
 - Remote Time Service Set
 - Service Group
 - Simplified Tutorial
 - System Prompts
 - Transfer Recall to a Mailbox
 - Transfer to Mailbox
 - Trunk Service (Universal Port)
 - Voice Mail Service
 - Subscriber Features
 - Auto Receipt
 - Automatic Fax Delivery
 - Automatic Login
 - Autoplay New Message
 - Bookmark
 - Call-through Service
 - Call Transfer Scenario
 - Call Transfer Status
 - Callback Number Entry
 - Caller ID Callback
 - Delete Message Confirmation
 - Direct Service Access

E-mail Client Integration Features

- Integration with Microsoft Outlook
- IMAP Integration

3. Network Features

Public Network Features

- SIP (Session Initiation Protocol) Trunk
- SIP Server Failover
- Direct SIP Connection
- Integrated Services Digital Network (ISDN) Service Features
 - Calling/Connected Line Identification Presentation (CLIP/COLP)
 - Advice of Charge (AOC)
 - Call Forwarding (CF)—by ISDN (P-MP)
 - Call Forwarding (CF)—by ISDN (P-P)
 - Call Hold (HOLD)—by ISDN
 - Call Transfer (CT)—by ISDN
 - Three-party Conference (3PTY)—by ISDN
 - Malicious Call Identification (MCID)
 - Completion of Calls to Busy Subscriber (CCBS)
 - ISDN Service Access by Keypad Protocol

Multi-connection Networking

- Network Type Comparison
- Multi-connection Networking Survivability
- Simplified Isolated Mode

Private Network Features

- TIE Line Service
 - Making a TIE Line Call
 - TIE Line and Trunk Connection
 - TIE Line Programming
 - Common Extension Numbering for 2 PBXs
 - Voice over Internet Protocol (VoIP) Network
 - Gateway Groups
 - Common Extension Numbering for Multiple PBXs
 - Call Distribution Port Group
- ISDN Virtual Private Network (ISDN-VPN)

External Message Delivery Service

- Fax Cover Page
- Fax Driver
- Forwarding to a Mailbox
- Group Distribution Lists
- Incomplete Call Handling Service
- Live Call Screening (LCS)
- Mailbox
- Mailbox Capacity Warning
- Manager Service Switching
- Message Transfer
- Personal Custom Service
- Personal Greetings
- Private Message
- Recover Message
- Remote Absent Message
- Remote Call Forwarding Set
- Send to Fax Machine
- Subscriber Tutorial
- Timed Reminder Setting
- Toll Saver
- Two-way Record/Two-way Transfer
- Urgent Message
- Voice Mail (VM) Transfer Button
- Web Programming

E-mail Client Integration Features

- Integration with Microsoft Outlook
- IMAP Integration

3. Network Features

Public Network Features

- SIP (Session Initiation Protocol) Trunk
- SIP Server Failover
- Direct SIP Connection
- Integrated Services Digital Network (ISDN) Service Features
 - Calling/Connected Line Identification Presentation (CLIP/COLP)
 - Advice of Charge (AOC)
 - Call Forwarding (CF)—by ISDN (P-MP)
 - Call Forwarding (CF)—by ISDN (P-P)
 - Call Hold (HOLD)—by ISDN
 - Call Transfer (CT)—by ISDN
 - Three-party Conference (3PTY)—by ISDN
 - Malicious Call Identification (MCID)
 - Completion of Calls to Busy Subscriber (CCBS)
 - ISDN Service Access by Keypad Protocol

Multi-connection Networking

- Network Type Comparison
- Multi-connection Networking Survivability
- Simplified Isolated Mode

Private Network Features

- TIE Line Service
 - Making a TIE Line Call
 - TIE Line and Trunk Connection
 - TIE Line Programming
 - Common Extension Numbering for 2 PBXs
 - Voice over Internet Protocol (VoIP) Network
 - Gateway Groups
 - Common Extension Numbering for Multiple PBXs
 - Call Distribution Port Group
- ISDN Virtual Private Network (ISDN-VPN)

QSIG Standard Features

- Calling/Connected Line Identification Presentation (CLIP/COLP) and Calling/Connected Name Identification Presentation (CNIP/CNPN)—by QSIG
- Group Distribution Lists
- Incomplete Call Handling Service
- Live Call Screening (LCS)
- Mailbox
- Mailbox Capacity Warning
- Manager Service Switching
- Message Transfer
- Personal Custom Service
- Personal Greetings
- Private Message
- Recover Message
- Remote Absent Message
- Remote Call Forwarding Set
- Send to Fax Machine
- Subscriber Tutorial
- Timed Reminder Setting
- Toll Saver
- Two-way Record/Two-way Transfer
- Urgent Message
- Voice Mail (VM) Transfer Button
- Web Programming

E-mail Client Integration Features

- Integration with Microsoft Outlook
- IMAP Integration

3. Network Features

Public Network Features

- SIP (Session Initiation Protocol) Trunk
- SIP Server Failover
- Direct SIP Connection
- Integrated Services Digital Network (ISDN) Service Features
 - Calling/Connected Line Identification Presentation (CLIP/COLP)
 - Advice of Charge (AOC)
 - Call Forwarding (CF)—by ISDN (P-MP)
 - Call Forwarding (CF)—by ISDN (P-P)
 - Call Hold (HOLD)—by ISDN
 - Call Transfer (CT)—by ISDN
 - Three-party Conference (3PTY)—by ISDN
 - Malicious Call Identification (MCID)
 - Completion of Calls to Busy Subscriber (CCBS)
 - ISDN Service Access by Keypad Protocol

Multi-connection Networking

- Network Type Comparison
- Multi-connection Networking Survivability
- Simplified Isolated Mode

Private Network Features

- TIE Line Service
 - Making a TIE Line Call
 - TIE Line and Trunk Connection
 - TIE Line Programming
 - Common Extension Numbering for 2 PBXs
 - Voice over Internet Protocol (VoIP) Network
 - Gateway Groups
 - Common Extension Numbering for Multiple PBXs
 - Call Distribution Port Group
- ISDN Virtual Private Network (ISDN-VPN)

4. System Configuration and Administration Features

System Configuration—System

- Class of Service (COS) Group
- Tenant Service
- Time Service
- Operator Features
- Manager Features
- System Configuration—Extensions
 - IP Proprietary Telephone (IP-PT)
 - SIP (Session Initiation Protocol) Extension
 - Simple Remote Connection
 - Panasonic SIP Phones (P-SIP)
 - Peer-to-Peer (P2P) Connection
 - Portable Station (PS) Features
 - Portable Station (PS) Connection
 - PS Ring Group
 - PS Directory
 - PS Feature Buttons
 - ISDN Extension Features
 - ISDN Extension
 - IP-CS (KX-NS0154)
- Legacy Device Connection
 - Stacking Connection
 - Trunk Adaptor Connection
- E-mail Notification Features
 - E-mail Notification for Extension Users
 - E-mail Notification of System-level Events
 - E-mail Notification of Sensor Alarm
 - E-mail Notification for Manager
- System Data Control
 - PC Programming
 - PT Programming
 - DSP Resource Usage
 - DSP Resource Reservation
 - DSP Resource Advisor
 - Automatic Setup
 - Dynamic Host Configuration Protocol (DHCP) Server
 - Flexible Numbering/Fixed Numbering
 - Floating Extension
 - Software Upgrading
- Fault Recovery/Diagnostics
 - UPS (Uninterruptible Power Supply) Integration
 - Power Failure Transfer
 - Power Failure Restart
 - Local Alarm Information
 - Simple Network Management Protocol (SNMP) System Monitor
 - Dynamic Host Configuration Protocol (DHCP) Assignment
 - PING Confirmation
 - System Monitoring

• Functions and maximum capacity vary depending on the KX-NSX2000/KX-NSX1000 software version.
• Some operations may vary depending on the type of telephone being used. Please consult a Panasonic sales company for details.
• Note that the types of activation keys are subject to change without notice.